

SFAC 6 “Very Basic” Tutorial¹

Before starting, be sure to clear out any other information in the application by selecting “File”, then “New”, and then “Model” from the menu ribbon. Confirm that you want to delete the model information which will also delete all report information in the Luca application.

Rather than entering this information, you can copy/paste information from Excel to get information into the Luca application².

Step 1: Enter base information.

Select “Edit” and then “Base Information”. The Base Information form will appear. Enter the base information that will be used by the XBRL taxonomy:

Code	Namespace Prefix	Namespace Identifier	Schema Name	Schema Location	Default Language	Taxonomy Description
Local	sfac6	http://www.xbrlsite.com/sfac6	sfac6.xsd	sfac6.xsd	English	SFAC 6 Elements of Financial Statement

Step 2: Enter term information.

Select “Edit” and then “Terms”. The Terms form will appear. Enter term information. When you begin, your form will look like this:

Category	Standard Label	Prefix	Name	Data Type	Balance Type	Period Type
----------	----------------	--------	------	-----------	--------------	-------------

After you have finished entering your terms for the SFAC 6 XBRL taxonomy, your term information for the XBRL taxonomy should look like this:

¹ SFAC 6 Very Basic, <http://xbrlsite.azurewebsites.net/2020/master/sfac6-basic/index.html>

² Excel spreadsheet with import information, <http://www.xbrlsite.com/2020/luca/SFAC6-Step1-Luca-Import.zip>

Terms						
Drag a column header here to group by that column						
Category	Standard Label	Prefix	Name	Data Type	Balance Type	Period Type
▶ Concept	Assets	sfac6	Assets	Monetary	Debit	Instant
Concept	Liabilities	sfac6	Liabilities	Monetary	Credit	Instant
Concept	Equity	sfac6	Equity	Monetary	Credit	Instant
Concept	Comprehensive Income	sfac6	ComprehensiveIncome	Monetary	Credit	Duration
Concept	Investments by Owner	sfac6	InvestmentsByOwner	Monetary	Credit	Duration
Concept	Distributions to Owner	sfac6	DistributionsToOwner	Monetary	Debit	Duration
Concept	Revenues	sfac6	Revenues	Monetary	Credit	Duration
Concept	Expenses	sfac6	Expenses	Monetary	Debit	Duration
Concept	Gains	sfac6	Gains	Monetary	Credit	Duration
Concept	Losses	sfac6	Losses	Monetary	Debit	Duration
Abstract	Balance Sheet [Set]	sfac6	BalanceSheetSet			
Abstract	Comprehensive Income [Roll Up]	sfac6	ComprehensiveIncomeRollUp			
Abstract	Changes in Equity [Roll Forward]	sfac6	ChangesInEquityRollForward			
*						

Alternatively, you can copy information from Excel and then paste it into the TERMS form.

Step 3: Enter label information.

Select “Edit” and then “Labels” from the menu ribbon. Before you enter any information, the labels form will look as follows:

Labels			
Drag a column header here to group by that column			
Term	Language	Label Role	Label
▶			

After you have finished entering your label information for the SFAC 6 XBRL taxonomy, your labels information for SFAC 6 should look like this:

Labels			
Drag a column header here to group by that column			
Term	Language	Label Role	Label
sfac6:Equity	English	PeriodStart	Beginning Balance
sfac6:Equity	English	PeriodEnd	Ending Balance
sfac6:DistributionsToOwner	English	Negated	(Distributions to Owner)
sfac6:Expenses	English	Negated	(Expenses)
sfac6:Losses	English	Negated	(Losses)
▶			

Again, alternatively this information can be copied and then pasted from Excel.

Step 3: Enter structure information.

Select “Edit” and then “Structures” from the menu ribbon. Before you enter any information, the structures form will look as follows:

Structures		
Drag a column header here to group by that column		
Identifier	Title	Sequence
*		

After you have finished entering your structures for the SFAC 6 XBRL taxonomy, your structure information for the XBRL taxonomy should look like this:

Structures		
Drag a column header here to group by that column		
Identifier	Title	Sequence
BalanceSheet	01-Balance Sheet	1
ComprehensiveIncome	03-Comprehensive Income	2
ChangesInEquity	07-Changes in Equity	3
*		

Again, alternatively this information can be copied/pasted from Excel.

Step 4: Enter associations information.

Select “Edit” and then “Associations” from the menu ribbon. Before you enter any information, the associations form will look as follows:

Associations							
Drag a column header here to group by that column							
Structure Type	Network Identifier	Association From Name	Association Role	Association To Name	Calculation Polarity	Preferred Label Role	Sequence

After you have finished entering your associations for the SFAC 6 XBRL taxonomy, your associations information for the XBRL taxonomy should look like this:

Structure Type	Network Identifier	Association From Name	Association Role	Association To Name	Calculation Polarity	Preferred Label Role	Sequence
► Presentation	BalanceSheet	sfac6:BalanceSheetSet	Parent-Child	sfac6:Assets			1
Presentation	BalanceSheet	sfac6:BalanceSheetSet	Parent-Child	sfac6:Liabilities			2
Presentation	BalanceSheet	sfac6:BalanceSheetSet	Parent-Child	sfac6:Equity			3
Presentation	ComprehensiveIncome	sfac6:ComprehensiveIncomeRollUp	Parent-Child	sfac6:Revenues			4
Presentation	ComprehensiveIncome	sfac6:ComprehensiveIncomeRollUp	Parent-Child	sfac6:Expenses			5
Presentation	ComprehensiveIncome	sfac6:ComprehensiveIncomeRollUp	Parent-Child	sfac6:Gains			6
Presentation	ComprehensiveIncome	sfac6:ComprehensiveIncomeRollUp	Parent-Child	sfac6:Losses			7
Presentation	ComprehensiveIncome	sfac6:ComprehensiveIncomeRollUp	Parent-Child	sfac6:ComprehensiveIncome			8
Presentation	ChangesInEquity	sfac6:ChangesInEquityRollForward	Parent-Child	sfac6:Equity		PeriodStart	1
Presentation	ChangesInEquity	sfac6:ChangesInEquityRollForward	Parent-Child	sfac6:ComprehensiveIncome			2
Presentation	ChangesInEquity	sfac6:ChangesInEquityRollForward	Parent-Child	sfac6:InvestmentsByOwner			3
Presentation	ChangesInEquity	sfac6:ChangesInEquityRollForward	Parent-Child	sfac6:DistributionsToOwner			4
Presentation	ChangesInEquity	sfac6:ChangesInEquityRollForward	Parent-Child	sfac6:Equity		PeriodEnd	5
Calculation	ComprehensiveIncome	sfac6:ComprehensiveIncome	Total-Item	sfac6:Revenues	Add		1
Calculation	ComprehensiveIncome	sfac6:ComprehensiveIncome	Total-Item	sfac6:Expenses	Subtract		2
Calculation	ComprehensiveIncome	sfac6:ComprehensiveIncome	Total-Item	sfac6:Gains	Add		3
Calculation	ComprehensiveIncome	sfac6:ComprehensiveIncome	Total-Item	sfac6:Losses	Subtract		4

Again, alternatively this information can be copied/pasted from Excel.

Step 5: Enter rules information.

Select “Edit” and then “Rules” and then “Consistency” from the menu ribbon. Before you enter any information, the rules form will look as follows:

Rule Type	Rule Code	Rule	Network	Concept	Sequence	Commentary
►						

After you have finished entering your rules for the SFAC 6 XBRL taxonomy, your rules information for the XBRL taxonomy should look like this:

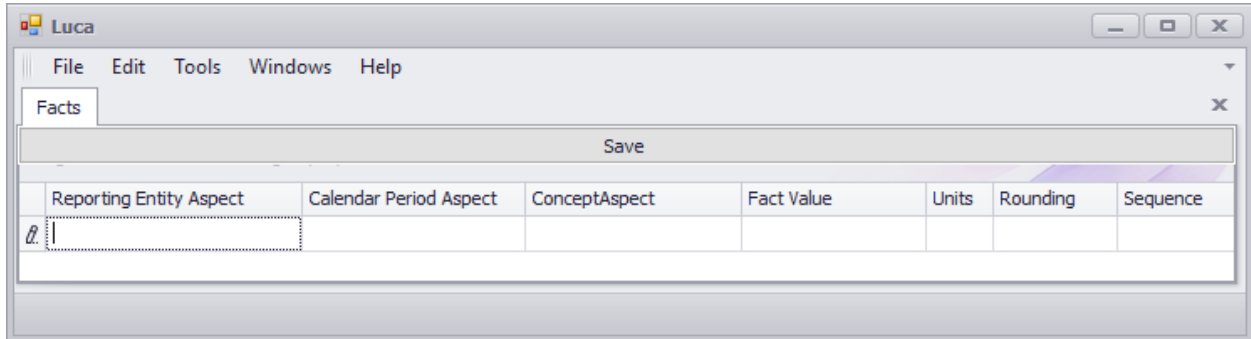
Rule Type	Rule Code	Rule	Network	Concept	Sequence	Commentary
Consistency	BS01	\$Assets = \$Liabilities + \$Equity	BalanceSheet	sfac6:Assets	1	
Variable Name ► sfac6:Assets sfac6:Liabilities sfac6:Equity *						
RollForward	RF01	\$Equity_BalanceStart + \$ComprehensiveIncome + \$InvestmentsByOwner - \$DistributionsToOwner = \$Equity_BalanceEnd	ChangesInEquity	sfac6:Equity	2	
Variable Name ► sfac6:Equity sfac6:ComprehensiveIncome sfac6:InvestmentsByOwner sfac6:DistributionsToOwner *						

IMPORTANT NOTE!!! If you copy/paste the rule into the Luca application from the Excel spreadsheet, you will need to enter the three variables.

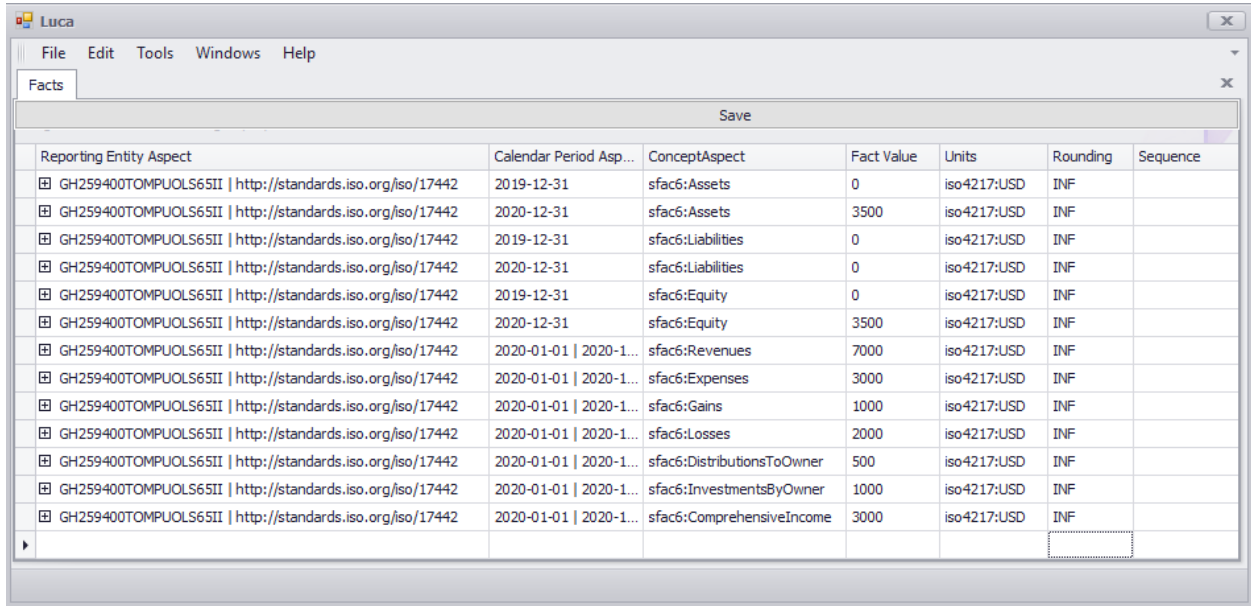
Close the rules form.

Step 6: Enter facts information.

Select “Edit” and then “Facts” from the menu ribbon. Before you enter any information, the facts form will look as follows:



After you have finished entering your facts the SFAC 6 report, your form should look like this:

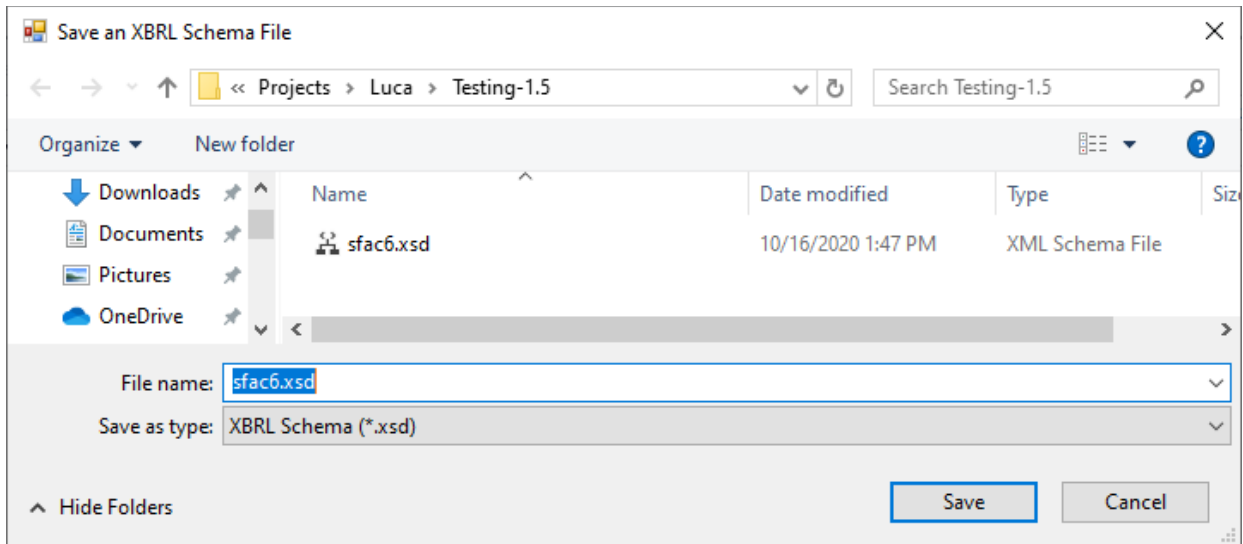


IMPORTANT NOTE!!! If you are using Luca version 2.1.1.0 or lower, notice the “Save” button above the facts that were entered. Be sure to press that “Save” button or the facts will not be saved by the application. If you are using Luca version 2.1.1.0 or HIGHER and don’t see that button; this is no longer necessary.

Step 7: Generate your XBRL taxonomy schema, linkbases, and XBRL instance.

After you have successfully entered all your term, label, structure, association, and rule information; then you can generate your XBRL taxonomy. This will include the XBRL taxonomy schema and the XBRL linkbases that will support your report.

To generate the XBRL taxonomy information, from the menu ribbon select “File” and then “Save as XBRL”. The following standard Windows dialog box will appear which will let you save your file.



In the “File name:” text box of the form, enter “sfac6.xsd” which will be the name of your XBRL taxonomy schema file.

Step 7: Verify that your XBRL is correct.

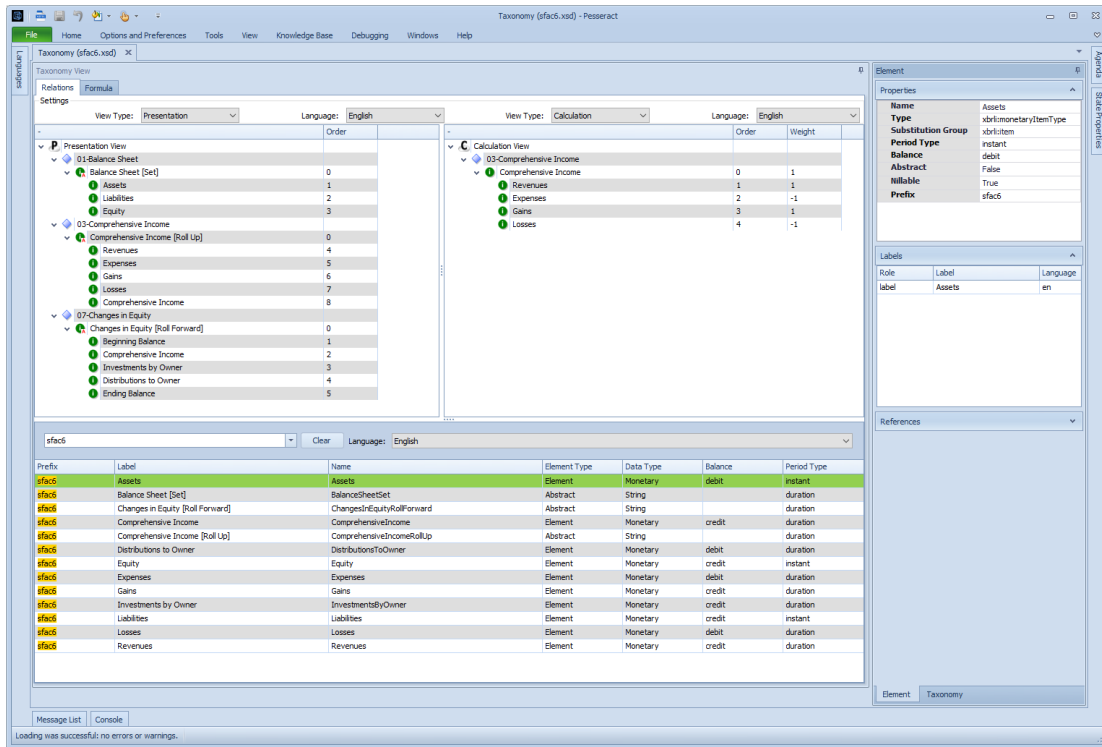
Luca does not provide XBRL syntax verification. And so, to validate the XBRL taxonomy and XBRL instance that you created, you will have to use an XBRL processor that provides XBRL, XBRL dimensions, and XBRL Formula validation.

If you validate the XBRL files using your favorite XBRL processor, you should see that you have no errors:

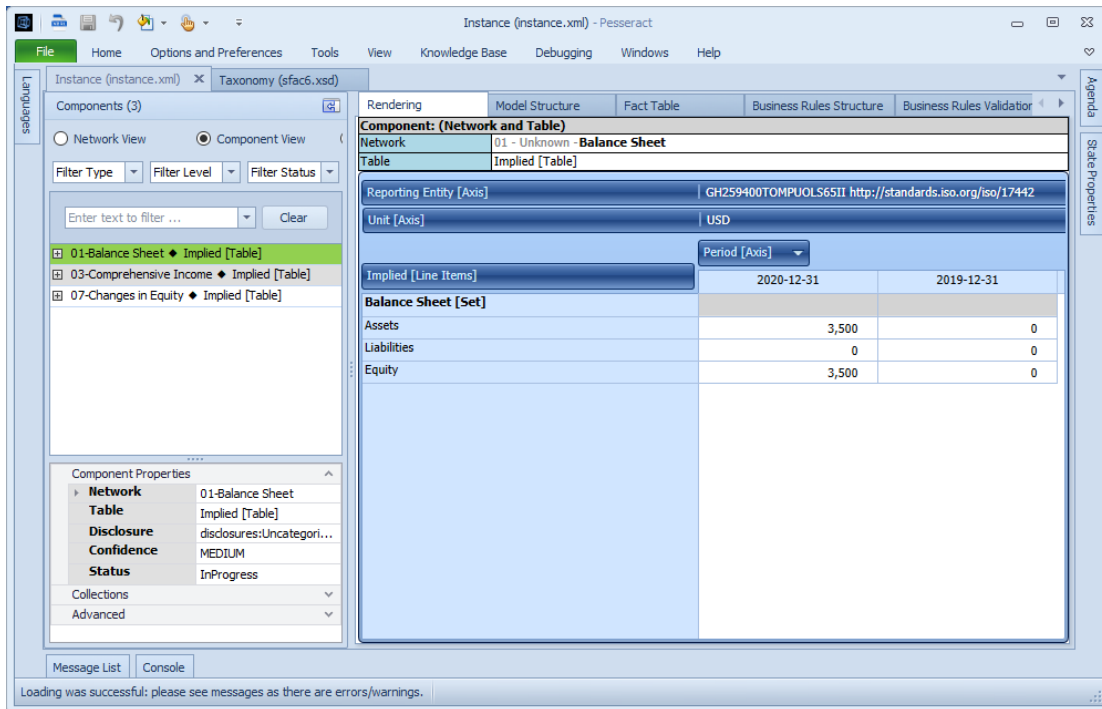
XBRL Validation Report	
Severity	Count
Error	0
Warning	0
Inconsistency	0
Best Practice	0
Information	0
Total	0

No Errors!

This is what the XBRL taxonomy looks like in Pesseract³:



Here is the XBRL instance:



³ Pesseract, <http://pesseract.azurewebsites.net/>